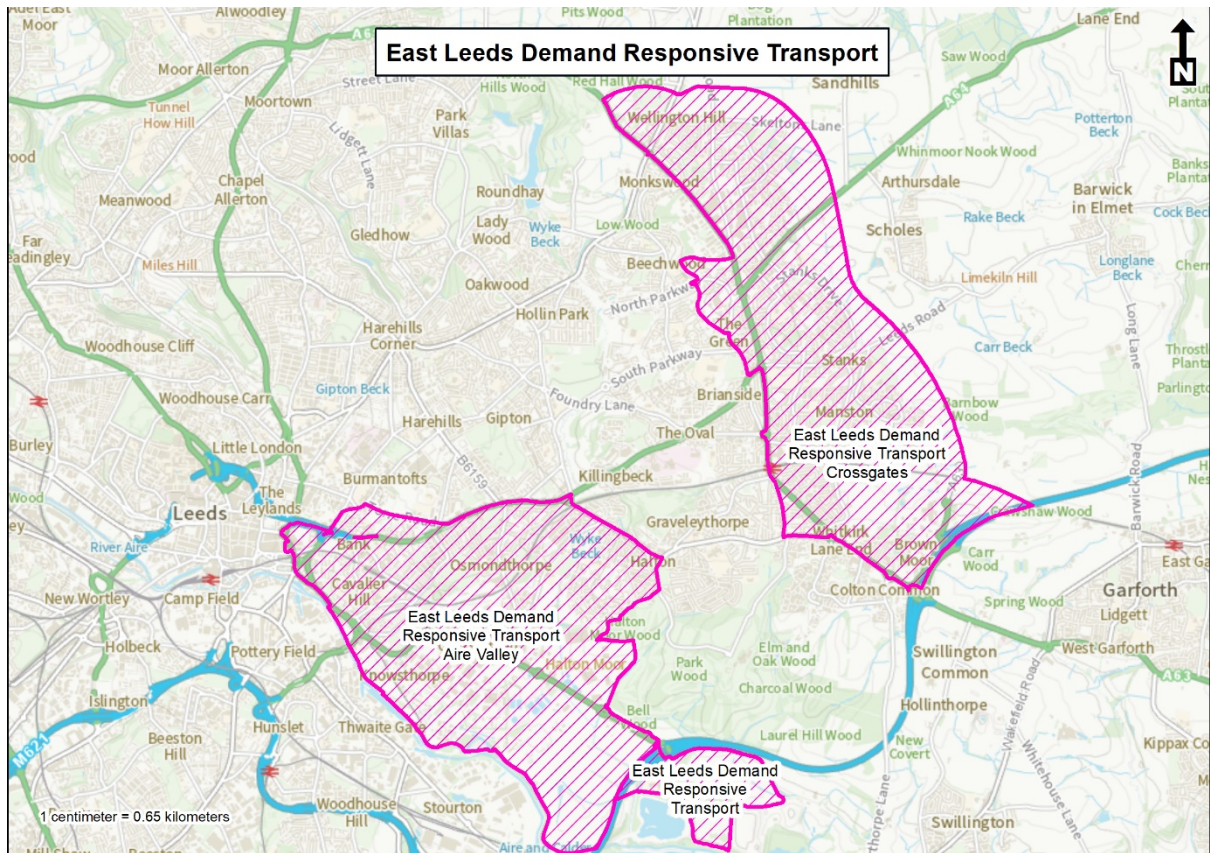
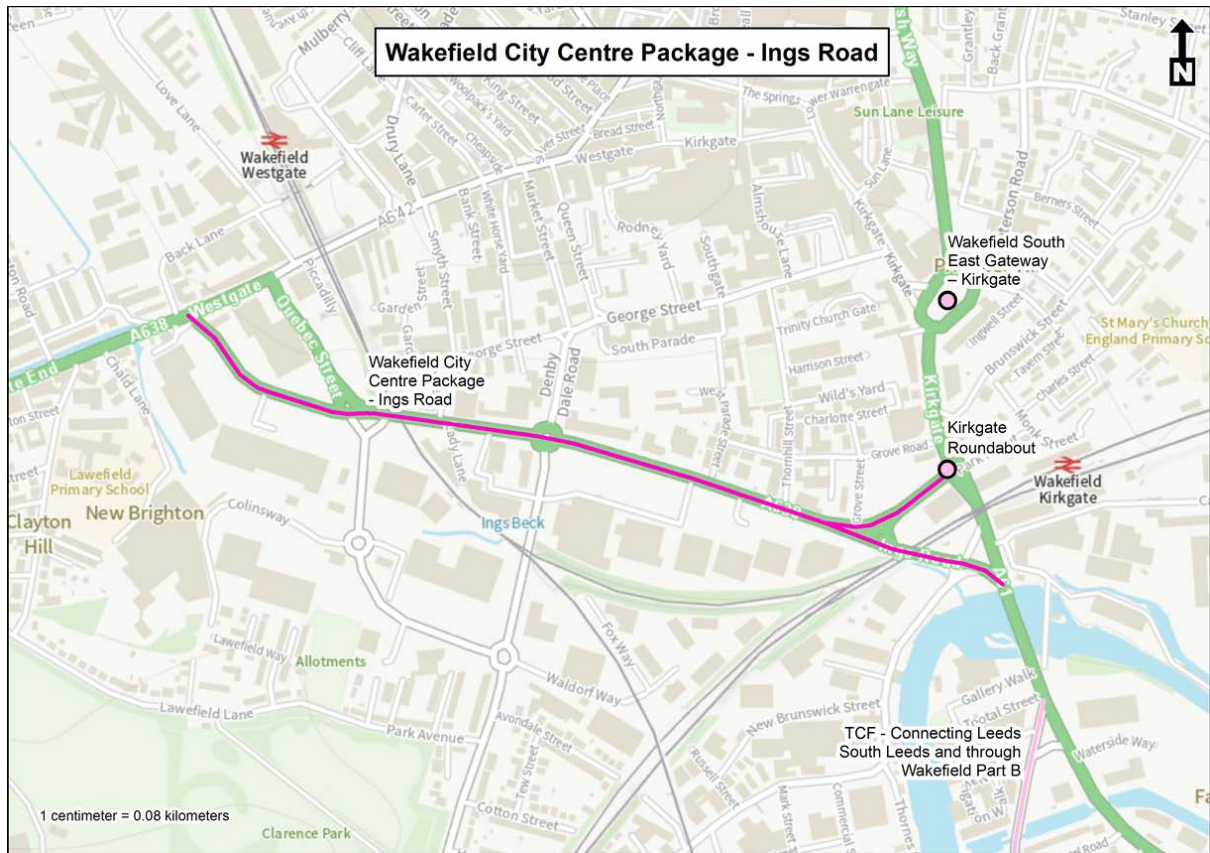


## Location Maps

The following map shows the location of the East Leeds Demand Responsive Transport (DRT) Scheme:

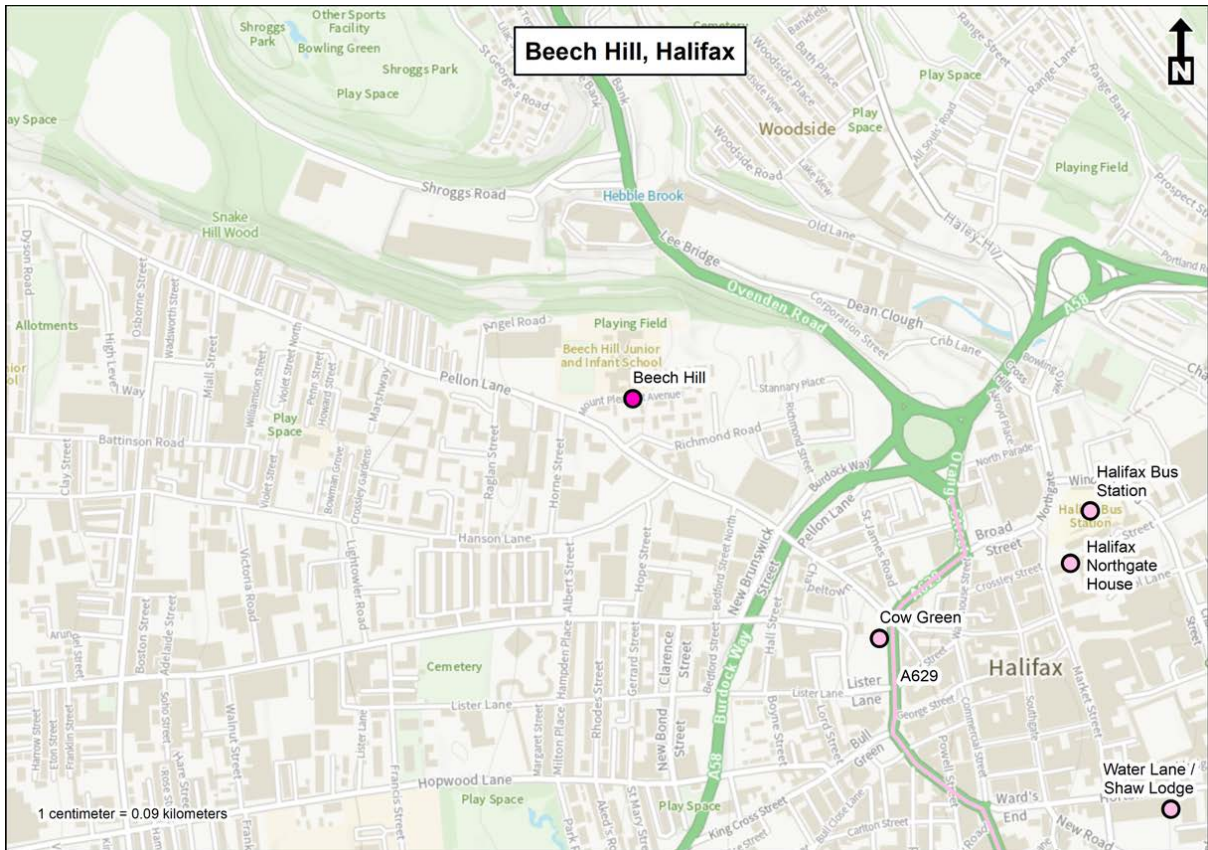


The following map shows the location of the Wakefield City Centre Phase 2 - Ings Road scheme:

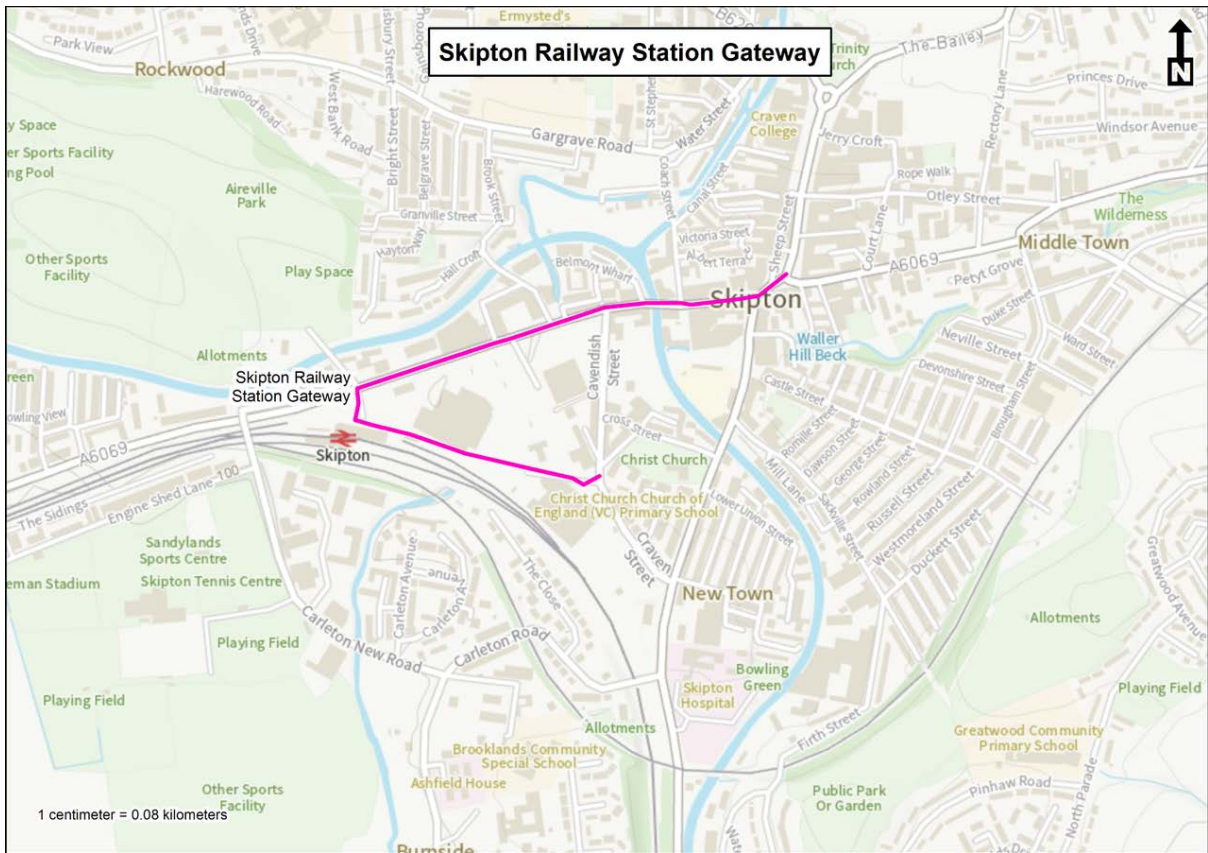




The following map shows the location of the Beech Hill Phase 2 scheme:



The following map shows the location of the TCF Skipton Railway Station Gateway - Active Travel Improvement Scheme:

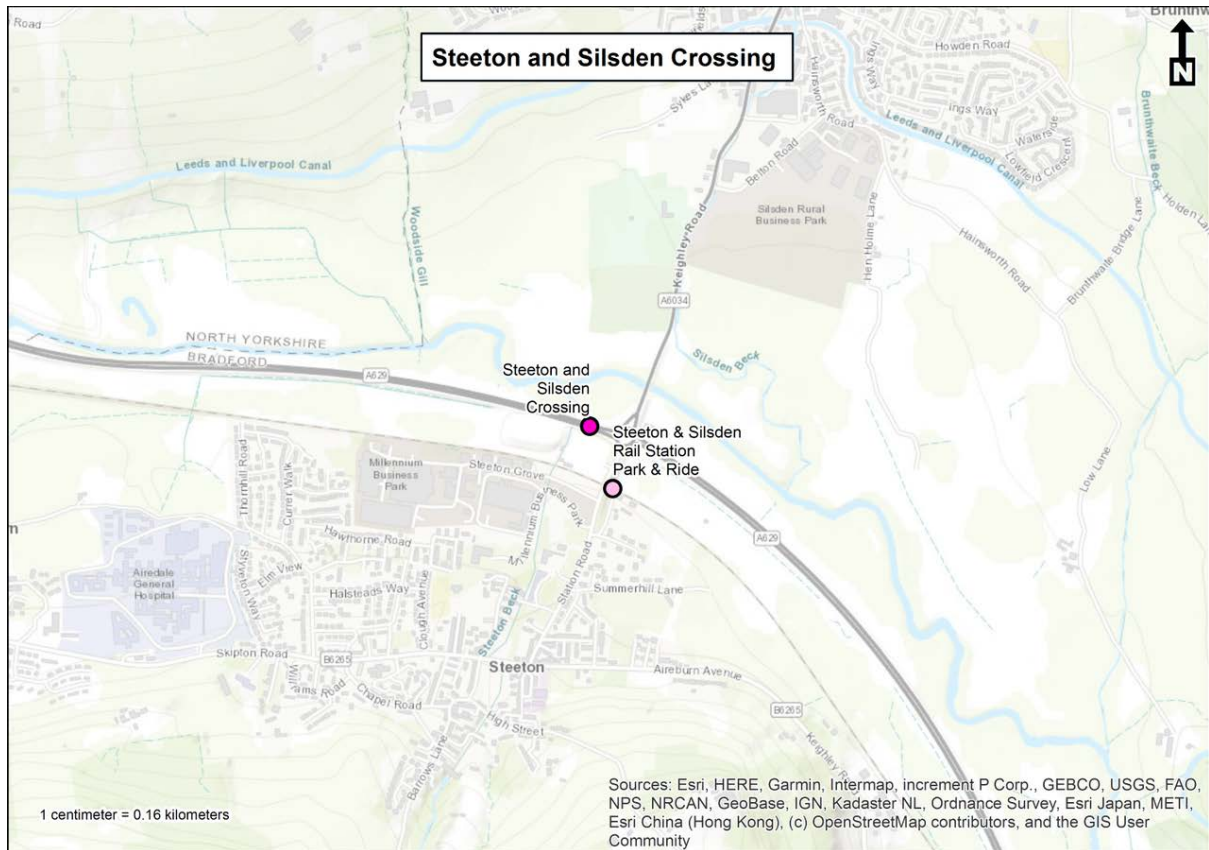


The following map shows the location of the TCF: Harrogate Railway Station Gateway - Active Travel Improvement Scheme:





The following map shows the location of the Steeton and Silsden Crossing scheme:



Please note, depending on the level of scheme development, the location and scope of the schemes indicated here are indicative only.

For further information on Combined Authority schemes across the Leeds City Region please refer to: <https://www.westyorks-ca.gov.uk/growing-the-economy/leeds-city-regioninfrastructure-map/>